



Manor House East

8 Front Street





Manor House East , 8 Front Street, Earsdon NE25 9JT

Guide Price £675,000

Manor House East is a handsome, Grade II listed stone built house, located in the centre of Earsdon village, with mature landscaped gardens to the front and rear, and a driveway and single garage accessed from the rear. The three/four bedroom period house, dating from the late 18th Century, has been a much loved family home for 28 years, and has well proportioned accommodation set over three floors offering excellent versatile reception space. The original manor house has been divided into two individual dwellings, with Manor House East benefiting from the impressive gated entrance on Front Street.

Reception hallway with under stairs storage | Drawing room with sash windows overlooking the front garden | Generous dining room | Galley style fitted kitchen with integrated appliances | Fabulous garden room with slate roof and skylight | Utility room and cloakroom/wc | First floor landing with stairs to the second floor and large store cupboard | Impressive master bedroom | Luxury ensuite bathroom | Guest double bedroom | Family bathroom/wc | Second floor | Third bedroom with door to bedroom four/home office | Ensuite bathroom

The house is approached via an attractive stone pillared entrance with ornate iron gates - the front formal garden is divided into parterres, featuring herbs such as sage, rosemary and bay, with box surrounds and yew pyramids and a fig tree to the front door. The fabulous rear garden has also been landscaped with attractive flagstone pathways, central lawns and apple trees which give a good annual crop. There is also a Summerhouse and small garden shed. Beyond the garden is a large gravel parking area, and a single garage with an electric door. The garage and parking is accessed via a secluded lane, with a recent new tarmac finish, off Church Way and serving only 5 properties.

Services: Mains Electric, Gas, Water & Drainage | Tenure: Freehold | Council Tax: Band F



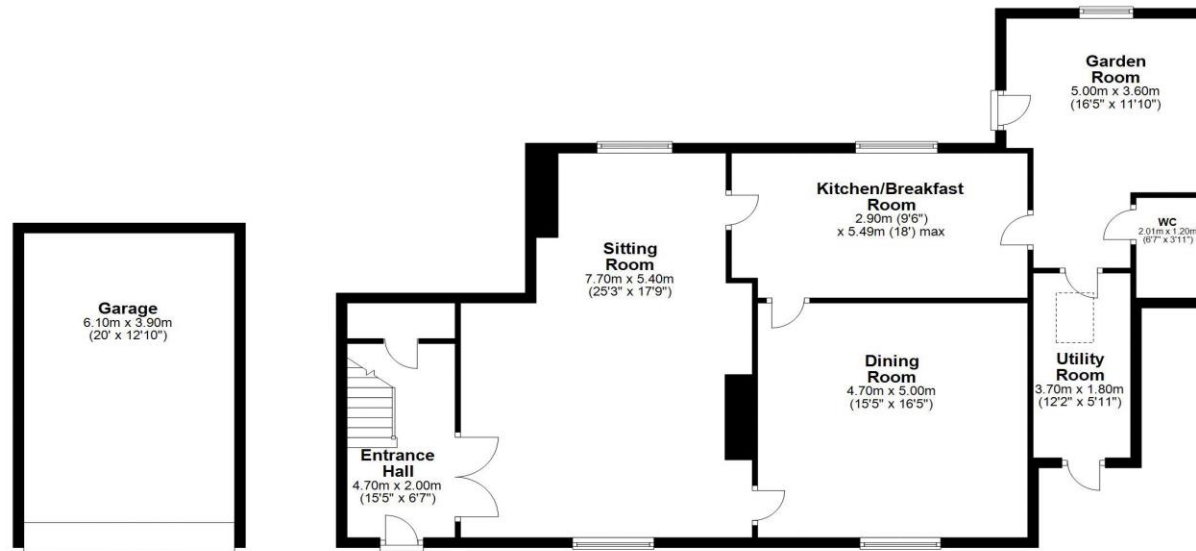






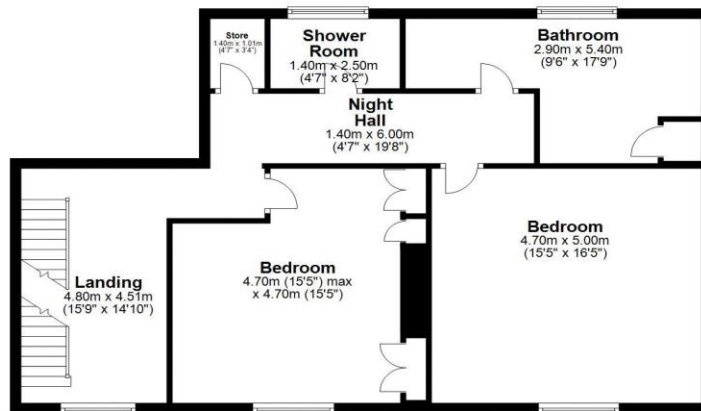
Ground Floor

Approx. 135.4 sq. metres (1457.6 sq. feet)



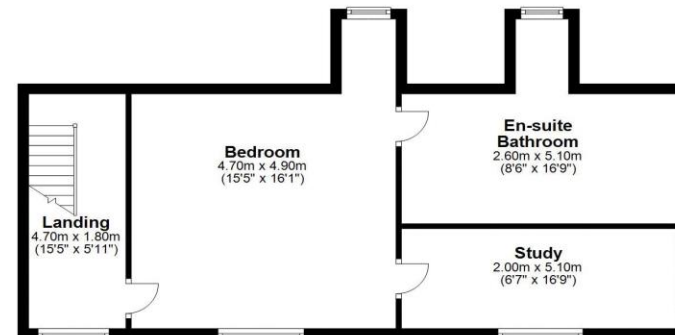
First Floor

Approx. 85.6 sq. metres (923.6 sq. feet)



Second Floor

Approx. 59.4 sq. metres (639.3 sq. feet)



Total area: approx. 280.6 sq. metres (3020.5 sq. feet)

Manor House East, 8 Front Street, Earsdon



All enquiries to our Gosforth Office | 95 High Street, Gosforth, Newcastle upon Tyne NE3 4AA

T: 0191 213 0033 | www.sandersonyoung.co.uk

